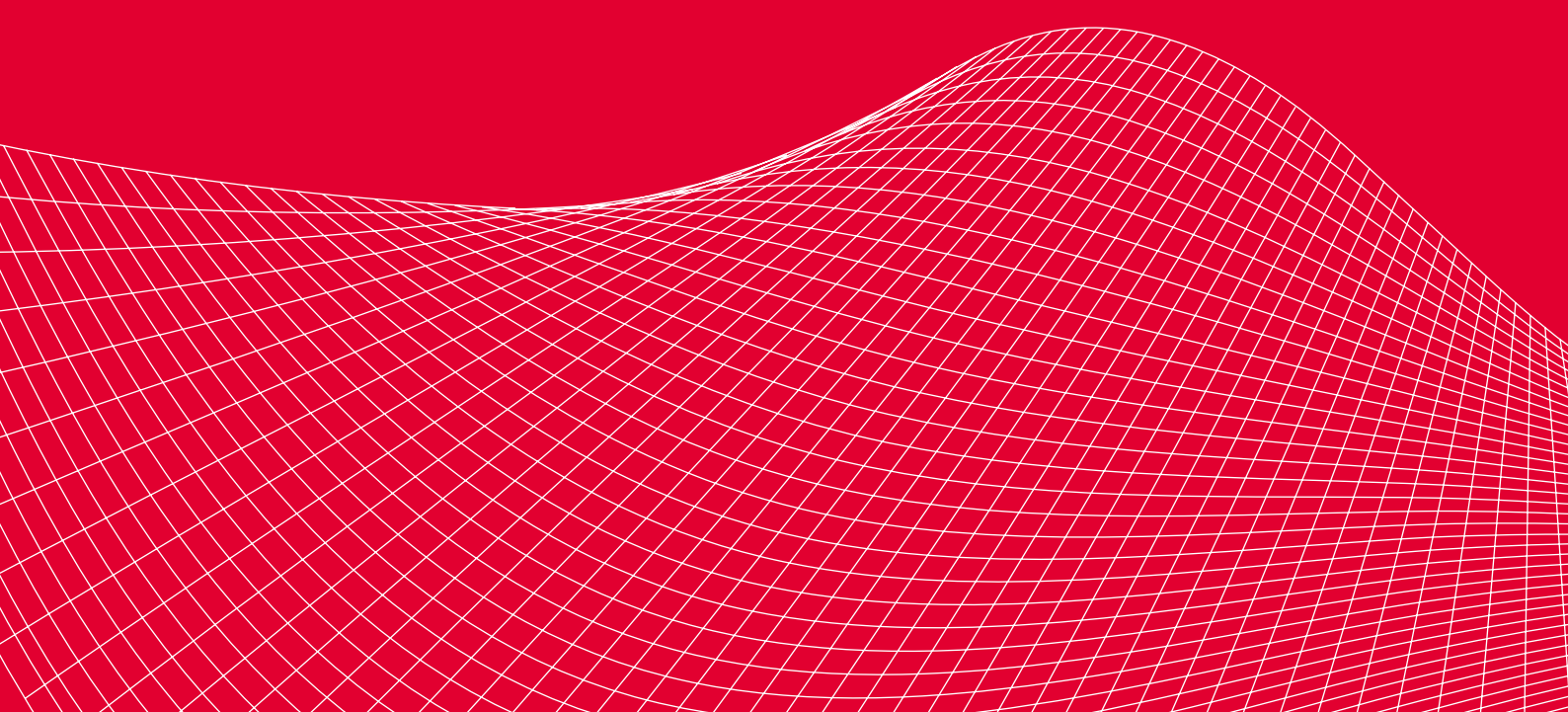


General Metal Finishing

General Metal Finishing Technology Perfectly Matched Concepts for Every Requirement



Technology for Tomorrow's Solutions



General Metal Finishing



History

**A Long History of
International Partnership**

Atotech was formed in 1993, as a result of a merger between M&T Harshaw and Schering Electroplating; both renowned international suppliers to the electroplating industry dating back to 1901.

With excellent research and development facilities, decades of experience and a comprehensive range of products, processes, and production systems, Atotech has been a leading partner to the decorative and functional electroplating and printed circuit board industry from the very beginning.

Today, Atotech is a direct subsidiary of the world's fourth largest oil and gas company, Total. Being part of the chemical branch of Total, Atotech has access to its substantial resources and benefits from production, R&D and distribution synergies within the group.



Today

**Innovating the World
of Surface Technology**

Atotech's General Metal Finishing (GMF) business unit provides its customers with the complete package of chemistry, production technology and comprehensive service while striving at all times to offer the best performance for specific requirements.

Attentive to customers' needs, Atotech GMF is continuously monitoring, testing and improving products, services, technology and manufacturing procedures in order to ensure quality, safety and innovation at each stage of the development, production and distribution process.

Today, Atotech GMF's major objective is to become the preferred surface technology provider for all functional and decorative components.



Service

**Best Local Service –
Think Global / Act Local**

Customer proximity is the top priority for Atotech. With Berlin as its main worldwide R&D and administration center, Atotech has regional headquarters with R&D and application centers in Rock Hill, USA and Yokohama, Japan supported by 40 regional service centers, 14 of which are specialized GMF TechCenters.

Atotech undertook major investments to install this worldwide network of GMF TechCenters in order to accelerate product development and to enhance local customer service capability effectively. All GMF TechCenters are equipped with production scale or manual pilot lines, as well as analytical and materials science service labs to offer the industries best local service.

With 15 production plants for chemistry and two for equipment, Atotech ensures world fast, on-time delivery of its products and equipment all over the world.



Products

**Best Products /
Production Solutions**

Atotech GMF is dedicated to offering perfectly matched production systems to the electroplating industry, comprising equipment, chemistry and unique local service. Atotech's product range covers technologies for the entire spectrum of decorative and functional surface treatment for various materials, from steel through aluminum to engineered plastics. Atotech can supply the right solution for every requirement, enabling customers to stay at the leading edge of technological advancement.

Due to years of experience with all kinds of applications Atotech has tremendous know-how about improving the quality and appearance of virtually every surface to be plated.

With customers on every continent, Atotech proves its quality and dependability wherever brilliant finishes, corrosion protection and durability are required.



Technology

**Leading Technology
and R&D Programs**

As one of the most innovative companies in the market, Atotech constantly stays in close contact with the market leaders to fulfill their present and future needs and align its R&D program accordingly. Therefore, Atotech GMF's main objective is to focus on providing global, cost-effective processes and systems solutions to the key customer end-markets, such as automotive, communication, sanitary and consumer goods.

The rapid advancement of requirements in the technology roadmap anticipated for the coming years will drive Atotech GMF to strengthen and further expand its partnerships with automotive manufacturers, OEMs and Tier I/II/III suppliers.

With new and improved processes and alternative production technologies and systems, Atotech is constantly striving for quality and environmental protection.



Green

Green Technology

With the awareness of environmental concerns, Atotech is not only dedicated to developing innovative systems and processes which improve performance and extend the life of its customers' products, but also to create extraordinary value for sustainable development through controlling and reducing the impact of its activities on people and the environment. Therefore, ecological acceptance, maximum safety, high performance, quality and profitability are equal in importance for Atotech's product development.

Atotech as the partner for green technology will support all its customers in installing and running more environmentally friendly technologies. By the use of greener technologies, Atotech's customers will benefit strongly as growing energy needs will be met and the overuse of water, chemistry, materials and equipment can be prevented.

General Metal Finishing Technology

Innovating the World of Electroplating

The General Metal Finishing division is dedicated to supplying the full package of chemistry, production technology and comprehensive service to the surface finishing industries in all different areas of applications and end-markets such as automotive, aerospace, construction, communication, furniture, sanitary and consumer goods.

Knowing well that all business is local, Atotech is a worldwide branch network with offices in more than 35 countries on five continents. Three regional headquarters, 14 GMF TechCenters and 17 production plants emphasize Atotech's expertise in offering the fastest and most efficient support to all its customers throughout the world. To ensure outstanding and globally consistent service, all local Atotech staff is trained constantly and all branches are equipped to provide the best technical service in the industry.



Berlin, Germany



Rock Hill, USA



Yokohama, Japan

- Regional Headquarters, R+D and TechCenter [3]
- ◆ R+D Center [7]
- GMF TechCenter [11]
- ▲ Chemistry Production [15]
- ★ Equipment Production [2]

Continuous communication throughout the whole supply chain as well as highly trained Atotech teams are the basis for Atotech's success in the industry. Atotech uses its intimate knowledge of the market and its close relationships with customers to tailor its research and development programs, enabling its partners to meet the challenges of technology advancement and to fulfill the needs of OEMs and Tier I/II/III suppliers.

With Atotech's supply chain management, R&D and customer-based support network, customers and customers' customers can rely on a team of experts for service, support and consultation in every business case. This enables Atotech to provide competent support "All Over the World and Just Around the Corner" now and in the future.



Green Technology



One of Atotech's main challenges as a chemical technology supplier is the sustainable development of processes and systems to ensure safe manufacturing and operations in the electroplating industry, while reducing its environmental footprint. Within GMF, Atotech develops sophisticated products to help its customers to minimize waste towards the goal of zero environmental impact. In addition Atotech has a strong commitment to further develop its know-how in recycling and wastewater treatment.

GMF's environmentally responsible chemical products range from Cr(VI)-free passivates and zinc flake processes, Cr(VI)- and phosphate-free conversion coatings through Cr(VI)-free decorative chrome electrolytes to ammonium-free acid zinc nickel electrolytes as well as low VOC zinc flake coating systems. Cyanide-free zincates and cyanide-free alkaline zinc, copper and silver processes are replacing cyanide-containing systems. Electroless nickel processes are free of Pb, Cd and ammonium. For decorative and hard chrome applications, non-PFOS mist suppressants are available. The GMF paint support technology product line works with bioremediation products, e.g. for superior paint detackification, paint removal or paint pretreatment applications. In addition to that, Atotech's auxiliary equipment supports the effort towards greener production.



EDEN® – Atotech’s electro dialysis system for continuous EN production offers up to a 35% reduction in waste volume and overall losses of Ni (drag-out not considered) can be reduced significantly with the optional use of an ion exchanger.

Using the integrated production technology for hard chrome plating of shock absorber rods – DynaChrome® – chromium consumption can be reduced by 15% and energy consumption by 30% compared to conventional systems. Furthermore, the utilization of water evaporation for chrome bath cooling enables the total recycling of rinse water, meaning there is no waste from the rinsing process.

With Tricotect®, Atotech’s regeneration technology for Cr(VI)-free passivates for a continuous removal of iron and zinc, savings in chemistry can be achieved up to 90%.

The Nikotect® system is an advanced maintenance and recycling technology for bright, semi-bright and MPS nickel electrolytes. It keeps production-quality levels, reduces rejects, helps to eliminate hazardous carbon waste, down time and periodic dilutions and furthermore it recovers valuable material and chemicals.

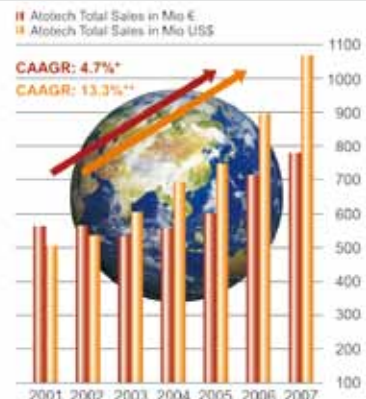
Atotech’s patent protected and fully automatic ZYpHEX® regeneration system enables high throughput applications to maintain the cloud point of Zylite® acid zinc electrolytes at a constantly high level. By the addition of acid, the dragged-in oil contaminations as well as the organic break-down products are effectively separated (TOC reduction up to 50%).

Atotech’s Contribution to Sustainable Performance of Customers – Summary of Documentation

Values at Customers

Uniplate Chemistry	-45% ↓
Uniplate Rinsing Water	-45% ↓
Permanganate Regeneration Energy	-25% ↓
Immersion Tin Chemistry	-66% ↓
Copper for Blind Microvia Filling	-50% ↓
Process Steps for Through-Hole Filling	-50% ↓
Electroless Nickel Waste	-96% ↓
Chromium Plating Chemicals	-15% ↓
Chromium Passivation Chemicals	-40% ↓
Bright Nickel Waste	-60% ↓

* Compounded Average Annual Growth Rate based on Euro
 ** Compounded Average Annual Growth Rate based on US\$



The Automotive Approach

Designed to comply with the most stringent quality and performance demands, Atotech's processes are approved and fulfill the requirements of a substantial number of OEM specifications. Atotech pays special attention to the needs and requirements of automotive manufacturers and their suppliers, as its major objective is to become the preferred surface technology provider for functional and decorative components for passenger cars and light and heavy vehicles. Therefore, Atotech's GMF product development is closely aligned to the performance requirements of the automotive industry. The link between Atotech's development teams and the OEM and Tier I decision-makers is guaranteed by an OEM-Tier I team of experts that is active in all major automotive regions, in particular in Europe, North America and Japan. A main goal of these activities is to assure that Atotech's products are homologated for present and future OEM specifications.

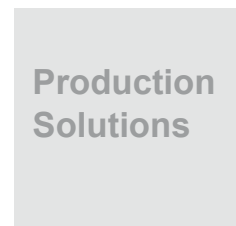
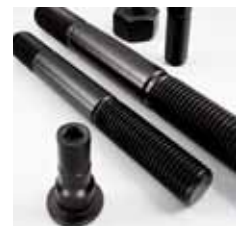
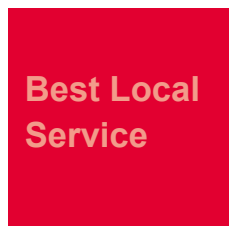
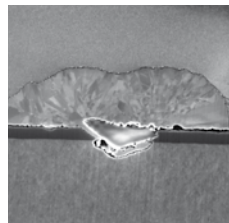
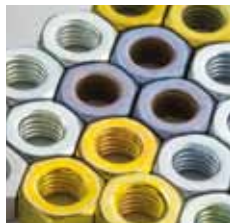


Dedicated Business Technology Teams

Due to specializing GMF Business Technology Teams for every technology field, Atotech is able to provide perfectly matched processes for each and every production step as well as the entire spectrum of applications, from pretreatment to final sealing. The GMF division is committed to truly understanding its customer's business to create value as a "partner supplier".

The GMF Business Technology Teams focus on:

- Decorative Coatings (Cu/Ni/Cr, Plating on Plastics, Precious Metals)
- Corrosion Protection Coatings (Electroplating, Mechanical Plating, Zinc Flake Technology)
- Wear Resistant Coatings (Functional Chrome, Electroless Nickel)
- Functional Electronic Coatings
- Paint Support Technology



Decorative Coatings

For decorative applications either on metal substrates or plastic materials, Atotech offers a complete range of pretreatments as well as copper, nickel and chrome processes. An assortment of precious metal processes, electrophoretic lacquers and rotogravure chemistry complements the product line. Moreover, a range of specially suited systems for the pretreatment of aluminum and magnesium substrates is available.

Plating on Plastics

Plastic and plastic composite materials play an important role in the automotive, sanitary and telecommunication industry. Atotech is recognized for its leading innovative technology in plating on plastics, offering comprehensive packages of conventional and direct plating processes such as **Adhemax®** and **Futuron® Ultra**. With **Adhemax®**, Atotech has created a new era in conventional decorative plating on plastics. Compared to existing conventional plating methods, **Adhemax®** offers advantages such as no rack metallization, selective plating properties and excellent stability.

Copper and Alloys

Whether the applications are grounding rods, plated automotive wheels, automotive decorative interior and exterior trim plastics, rotogravure for printing cylinders or nickel-free bright white finishes for skin contact use – Atotech meets virtually every need for decorative copper and copper alloy plating. As the world's leading supplier of copper, Atotech offers a complete range of dye-based and dye-free acid copper systems as well as rotogravure, pyrophosphate, immersion, cyanide and non-cyanide alkaline coppers. Globally recognized as the benchmark, **Cupracid®** processes are most widely used in the plating of automotive, sanitary, cosmetics, furniture and other kinds of industry components. **Cupracid®** is a dye-based process series, exhibiting excellent brightness, throwing power and superb leveling with a mirror finish, providing a coating with superior ductility.

Nickel and Alloys

Many years of experience in exterior automotive applications resulted in tremendous knowledge in how to improve the appearance, quality and corrosion performance for nickel chromium finishes. Today, Atotech offers the widest range of electrolytic nickel plating processes from satin, bright and semi-bright nickel to microporous, micro-cracked and high sulfur nickel for both rack and barrel applications. In addition to the chemistry, Atotech offers a complementary production technology approach such as the maintenance and recycling technology system for bright, semi-bright and MPS nickel electrolytes – **Nikotect®**, which is fitted with two individual components, the adsorber resin system and the membrane anodes, or **Satilume® LongLife** which maximizes the operating life of the satin processes. Both **Nikotect®** and **Satilume® LongLife** maintain the desired quality level, reduce rejects, help to eliminate hazardous waste, down time and the first periodic dilutions and furthermore recover valuable material and chemicals.

Chrome

Atotech's decorative chrome plating processes are routinely used as the final finish to improve the brightness, appearance, corrosion protection, wear resistance and endurance of many different kinds of decorative articles. Atotech offers classic hexavalent chrome plating processes as well as environmentally friendly trivalent electrolytes. The most common type of decorative chrome plating is bright chrome that produces, in combination with a lustrous bright nickel deposit, the highly demanded mirror-bright "chrome finish". Atotech's bright **TriChrome®** finishes are the environmentally friendly replacement for hexavalent chrome electrolytes. Alternatively, black chrome processes offer deep black non-reflective coatings, while the **TriChrome® Smoke** process range makes color adjustments of dark-grayish looks possible, often combined with satin nickel deposits. For high corrosion resistance requirements, either Atotech's multilayer nickel or "duplex chrome" processes enhance the performance remarkably. The decorative chrome plating portfolio furthermore includes non-PFOS mist suppressants, nickel activation processes as well as post-treatments for performance improvements of decorative chrome plating.

Precious Metals

When luxury surfaces are requested, Atotech's extensive range of precious metal processes allows designers to enhance everyday products with the attractive appearance of precious metals such as silver, gold, palladium, ruthenium or rhodium.



Corrosion Protection Coatings

In the area of corrosion protection coatings Atotech is the sole supplier, offering both electrolytic zinc and zinc alloy plating processes as well as zinc flake technology. The Atotech product range includes all types of zinc plating additives, the most comprehensive range of zinc nickel processes in the market, a wide choice of high performance Cr(VI)-free conversion coatings and sealers, silver and black zinc flakes as well as top coats and lubricants.

Zinc Electroplating

The extensive range of Atotech's zinc electroplating technologies comprises the latest development in chloride acid and cyanide-free alkaline zinc processes. Atotech's chloride acid zincs provide effective leveling to achieve brilliant, high-gloss zinc coatings of chromium-like appearance. **Zylite®** and **Unizinc ACZ** coatings offer high ductility across a wide current density and temperature range. The new generation **Zylite® ST** also operates without boric acid. In order to eliminate the use of additional chemicals, Atotech's patented regeneration system – **ZYPHEX®** – enables the customer to maintain the cloud point of high throughput acid zinc electrolytes constantly at a high level. **Protolux®** and **Unizinc NCZ** represent the portfolio of cyanide-free alkaline zinc plating processes for decorative and functional applications. These new generation processes are characterized by outstanding coating thickness distribution, high brightness and ductile coatings.

Zinc Alloy Electroplating

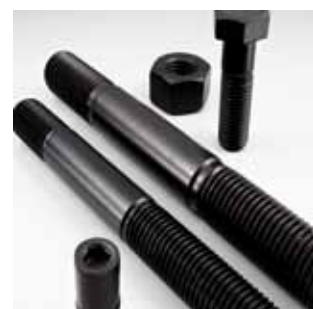
Atotech processes under the **Protedur®**, **Zinfer**, **Zinni** and **Reflectalloy®** brands are at the forefront of zinc alloy electroplating. These innovative and patented chemistries provide improved coating performance meeting the highest corrosion standards. **Reflectalloy® ZNA** is the optimized rack process, whereas **Zinni AL 450** is the recommended barrel process. Through the use of Atotech's patented membrane anodes for alkaline zinc nickel electrolytes, the process throughput and overall coating quality can be improved while the environmental footprint is reduced.

Post-treatment

As pure zinc coatings, zinc iron coatings and zinc nickel coatings react differently in the passivate solution, the Atotech passivates have been fine-tuned for each zinc and zinc alloy deposit. Atotech's unique sealer range provides best corrosion protection due to its reactive compounds. The sealer to be used on top of the selected passivate depends on the application of the coating. Atotech offers sealers with integrated lubricants which are especially composed for the fastener industry to adjust the coefficient of friction within a very narrow working window. Black pigmented sealers which intensify the black appearance complement the product range. Since the Japanese automotive industry is demanding unsealed surfaces, Atotech provides Cr(III)-based post-dips to be applied after passivation, meeting the corrosion protection requirements. To increase the bath life of the passivate processes, the **Tricotect®** regeneration system for the removal of zinc and iron contamination from passivates solutions has been developed.

Zinc Flake Technology

With a comprehensive zinc flake process range including silver and black base coats as well as organic and inorganic top coats, Atotech provides a perfect complement to its product portfolio of electroplated corrosion resistant coatings. The zinc flake technology is largely embraced by the fastener industry and a variety of other applications due to its special features. **Zintek®** is a heavy metal as well as Cr(VI)-free zinc flake system, which forms an adhesive bonding to iron or steel base material. As **Zintek®** is applied in a non-electrolytic dip spin and / or spray technique, hydrogen embrittlement is irrelevant. The base coat can be either silver or black. **Zintek®** base coats can be combined with inorganic or organic top coats to form multifunctional coatings, which provide highest corrosion protection and fulfill torque tension requirements. Specialized products for the mechanical plating of zinc complete the range.



Wear Resistant Coatings

Functional Chrome Plating

Wherever high hardness, superior wear performance and low friction are needed, Atotech's **HEEF®** process provides the ideal surface. The brand **HEEF®** "High Efficiency Etch Free" globally stands for the unsurpassed hard chrome plating process in the market, needed for shock absorbers, hydraulic rods, piston rings, engine valves, etc. With **HEEF® KR** Atotech has recently launched a new member of the **HEEF®** family offering improved corrosion resistance.

A unique integrated production system for the manufacturing of shock absorber rods – **DynaChrome®** complements Atotech's excellence in hard chrome technology.

In addition to its renowned products such as **HEEF®** and **DynaChrome®**, Atotech also offers a proven, robust and effective non-PFOS mist suppressant for the hard chrome plating industry – **Fumetrol® 21**. Its ease of operation, simple conversion of old systems and high stability make it the ideal choice for reducing the environmental impact as well as helping to comply with ever more stringent wastewater restrictions.

Lastly, Atotech provides the iron-phosphorous coating **Ferroplate®**, being the green alternative process to chrome, nickel and tin plating for aluminum and other soft metal substrates that require high surface hardness and excellent abrasion resistance.



Electroless Nickel Coatings

Ideal wear performance for a variety of applications such as brakes, fuel systems, planetary gears, valves and steering components is achieved with electroless nickel plating. Atotech offers ELV, WEEE and RoHS compliant electroless nickel processes and systems such as **Nichem ELeVEN** and **EDEN**[®] which are free of lead, cadmium and mercury, allowing applications within the automotive and electrical / electronic industries. The **Nichem ELeVEN** range also includes a low phosphorus **Nichem BlackEN** process for black electroless nickel finishes offering excellent heat and wear resistance.

With the patented **EDEN**[®] system combining equipment and chemistry, Atotech offers a continuous electro dialysis process, keeping the concentrations of all bath ingredients within a small range and guaranteeing practically constant process parameters over a potentially unlimited bath life. **EDEN**[®] produces electroless nickel coatings with consistently high quality deposit properties meeting the highest standards worldwide.

Atotech's electroless nickel portfolio also includes post-treatments such as the mildly alkaline, water soluble post electroless nickel rinse **GemENi Post-dip**, providing good water shedding in conjunction with improved storage corrosion protection.

The PTFE-based uniform wear resistant **GemENi Niflor**[®] 11 PF processes for metal and metal alloys, offering excellent lubrication properties and a low coefficient of friction, completes Atotech's product range of electroless nickel coatings.



Functional Electronic Coatings

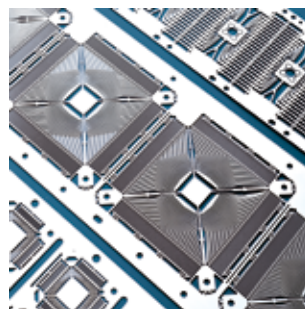
Aiming to provide connector and IC/leadframe industries with state-of-the-art systems and processes and superior manufacturing know-how, the functional electronic coatings business unit developed processes ranging from solder and pure Sn to high-speed Ni, Cu, Ag and Au plating. With the industry moving towards greener production targets, the product line was complemented by technology-driven processes serving mainly the high-end IC/leadframe market. Quality and reliability demands ask for tailor-made solutions combining such novel processes like leadframe roughening with ultrathin Ni/Pd/Au plating.

IC/Leadframe

At present, the functional electronic coatings product line offers chemistry, equipment and production know-how for four areas of the IC/leadframe manufacturing sequence. This includes the main plating bath additives and state-of-the-art pre- and post-treatment products for the following processes: Outer lead Sn and Sn/Pb plating with e.g. **StannoPure® HSM ST**, ultrathin Ni/Pd/Au plating, for leadframe roughening for MSL level improvement, **MoldPrep HMC** is the well-known product in the market and Ag Spot/Ring/Dot plating where **Silvertech HS** is the product of choice. As post-treatment processes **Protectostan® LF** and **Anti EBO T14** are well established in the industry.

Connectors

Furthermore, the product line provides the entire process range required for plating of all types of connectors for electric and electronic applications. This includes the main plating bath additives and state-of-the-art pre- and post-treatment products for high-speed Cu and Ni plating, pure Sn and Sn/Pb plating, Ag, Pd/Ni alloy (e.g. **Pallacor® HSNS**) and pure Au and Au alloys plating with e.g. the process series **Aurocor®. Betatec** as an example is worth being mentioned as refined post-treatment for connector applications.



Paint Support Technologies

Paint support technologies supplement Atotech's vast chemical surface treatment knowledge and process experience. Atotech's paint support technology processes are innovatively formulated to provide the latest environmentally responsible paint pretreatment, paint stripping and paint overspray treatment solutions to paint facilities around the globe. These processes reduce operating costs, improve production efficiency, promote safer work environments and minimize environmental impacts.

Pretreatment

UniPrep® is an environmentally responsible alternative to iron phosphate paint pretreatments. This system approach utilizes low temperature cleaners and high performing, phosphate-free adhesion promoters to provide quality paint pretreatment for multiple metal substrates.

Interlox® processes comprise phosphate-free, zirconium-based pretreatments and passivation technologies. **Interlox®** phosphate-free pretreatments minimize energy consumption, reduce or eliminate waste treatment activities and provide superior paint performance for multiple metal applications. **Interlox®** Cr(VI)-free and Cr-free aluminum passivates were developed to meet Mil DTL 5541 F and Mil DTL 81706 requirements for high corrosion performance and low electrical resistance and are ELV, RoHS and WEEE compliant.

MultiPrep® 35 is a versatile paint pretreatment approach that transforms a standard five or more stage pretreatment line into a multi-functional line without additional equipment or floor space investment. This system allows custom coaters to process multiple metal substrates with differing performance requirements through a single line, without changing chemical or system configurations.

Paint Overspray Treatment

KleerAid® is an innovative and production proven paint overspray treatment providing superior sludge quality, processing and environmental advantages. These benefits reduce cost, improve efficiency and increase worker safety. **KleerAid®** is a complete process utilized to treat wet paint overspray and is suitable for treating aqueous, solvent borne and systems containing mixtures of aqueous and solvent borne paints.

Paint Stripping

Master Remover processes are sustainable paint removal technologies providing many cost, process and environmental advantages over conventional paint removal techniques. **Master Remover** products are methylene chloride-free and efficiently remove E-coats, wet paints and powder coatings from multiple metal substrates without surface attack.



Production Technology for Green Surface Technology Solutions

In addition to its environmentally responsible chemical products, Atotech's auxiliary equipment also supports the effort towards greener production. The auxiliary systems line ranges from ion exchange technologies for Cr(III) passivates, electrolytic nickel and trivalent chrome plating electrolytes to metal recovery systems for electrolytic nickel and a regeneration system for acid zinc electrolytes. Large electroless nickel installations benefit from Atotech's state-of-the-art and patented electro dialysis system. Using Atotech's production technology demonstrates that cost-effectiveness and technology advantages can go hand in hand with environmental protection. Greener production supports customers in reducing their environmental footprint and helps to be more profitable in a sustainable way.

Atotech's Auxiliary Systems for Greener Production

- **EDEN®** – Electrodialysis system for continuous EN production
- **DynaChrome®** – Integrated production technology for hard chrome
- **Tricotect®** – Regeneration technology for Cr(VI)-free passivates for continuous removal of Fe and Zn
- **ZYpHEX®** – Regeneration technology for high throughput acid zinc electrolytes
- **Reflectalloy® ZNA XL** and **Zinni AL 450 XL** – Membrane anode technology for alkaline zinc nickel electrolytes
- **Nikotect®** – Recycling technology for nickel electrolytes
- **Satilume® LongLife** – Advanced regeneration system for satin nickel plating



Equipment Technology

For over 50 years Atotech has designed and produced systems for the plating industry at the Atotech site in Feucht, Germany. Chemical and equipment engineers work closely together to assure the compatibility of chemical processes and lines. Far more than 400 lines from Atotech are operating worldwide. A team of Atotech equipment and process specialists audits existing plating systems and develops proposals to optimize throughput, automation and quality. Atotech creates the complete engineering package for tanks, transporters, controls, wastewater, dosing and periphery and supports in purchasing, installation, initial operation and start of production. Atotech's software specialists work out concepts for alternative control systems and inform about specific advantages compared to existing systems. Atotech provides customized production solutions according to the product specifications and local conditions.

Optimum plating performance for surface treatment applications can be achieved by using innovative chemical technologies under optimized processing conditions. By combining our specialized chemical products with dedicated equipment, Atotech offers a systems solution to today's demands for consistently high performance at reduced processing costs. All equipment systems have been developed to increase plating productivity and to provide economical alternatives to other coating technologies.





Atotech Main Office
Erasmusstr. 20
D-10553 Berlin

Phone +49 (0)30 349 85 0
Fax +49 (0)30 349 85 777
www.atotech.com

Atotech – We Supply Solutions

Atotech is one of the world's largest suppliers of metallization production solutions for GMF (general metal finishing), PCB (printed circuit board) and semiconductor wafer applications. Atotech's international experience and market know-how provide you with:

Widest Product Range

Atotech's extensive knowledge and vast product offering give you highly productive systems and single-source responsibility. Solid research and development combined with decades of field-proven processing are your assurance of the best electroplating systems in the world.

Highest Product Quality

Atotech only works with certified suppliers to ensure the highest quality product with consistency second to none. Adherence to international quality standards is a way of life at Atotech.

Worldwide Service

With manufacturing, sales and service locations throughout the world, Atotech is positioned to effectively assist you now and in the future.

Reliable Delivery

Atotech's worldwide production and warehousing help keeping you in production, day after day, year after year. You will reduce storage costs and protect against lost production capacity.

Environmental Know-how

Atotech is committed to providing products and processes that are environmentally responsible according to the most stringent requirements on a global base.



Atotech regional Headquarters are situated in Rock Hill (USA), Berlin (Germany) and Yokohama (Japan)