

Niveostan®

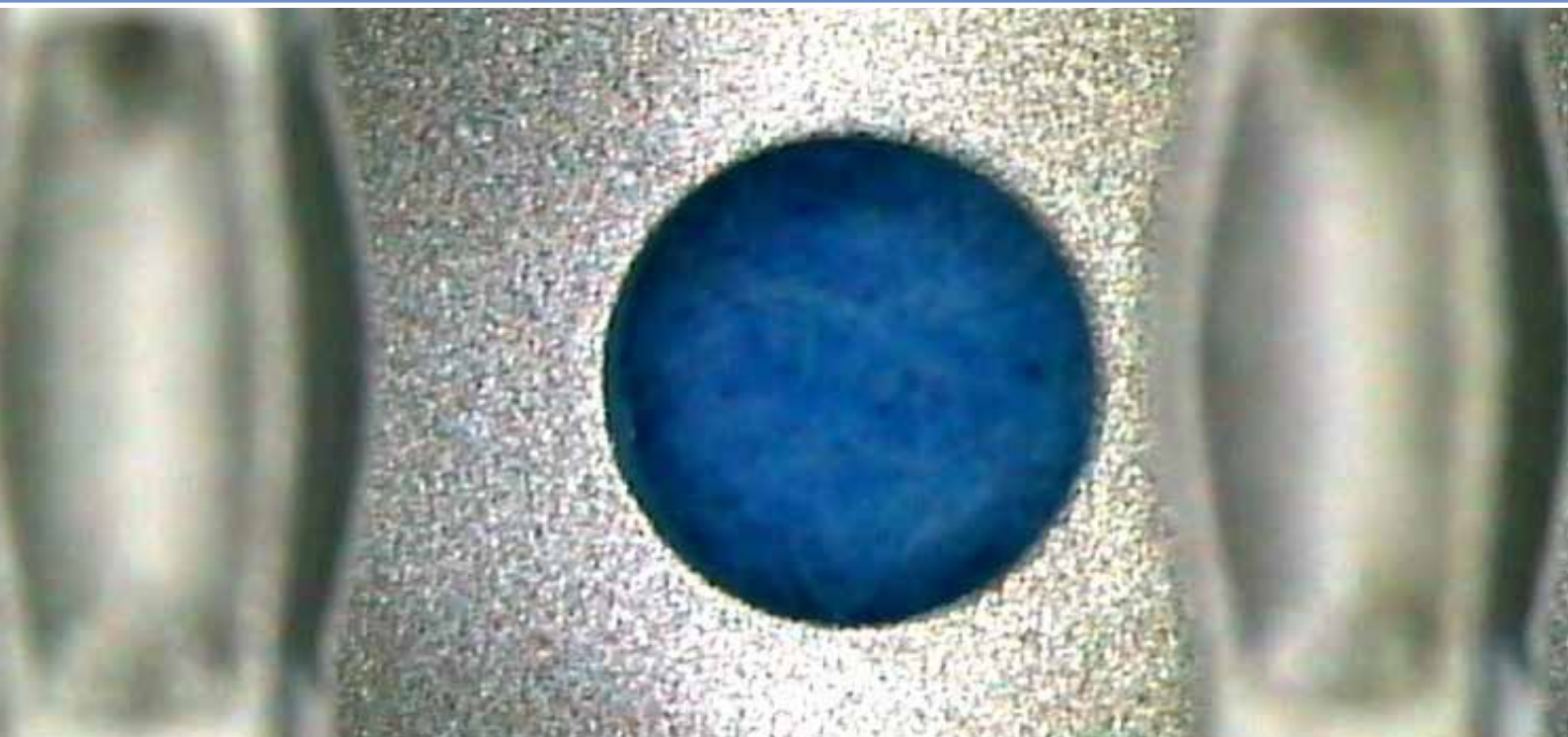
A product family for semibright, pure and large grained tin deposits



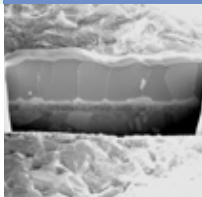
Electronics

Functional electronic coatings

atotech.com



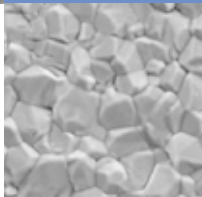
Niveostan® SL (Plus)



High and low speed

Universal solution for Reel to reel and rack/barrel plating. Deposition speed: 0.2 – 12 $\mu\text{m}/\text{min}$

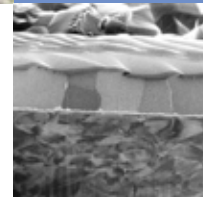
Niveostan® A1



Best uniformity

For the most demanding designs in rack plating. Deposition speed: 0.5 – 2.5 $\mu\text{m}/\text{min}$

Niveostan® 200



Highest speed version

For the fastest deposition technology. Deposition speed: 2 – 30 $\mu\text{m}/\text{min}$

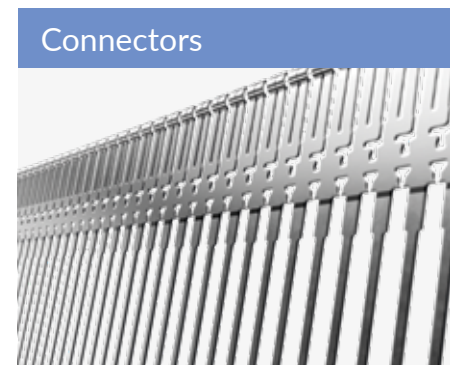
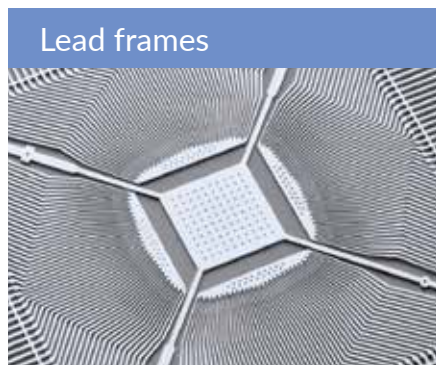
StannoPure® product family

- Semibright deposits
- Large crystals with a brick like structure and a flatter surface morphology than standard matt deposits
- Qualified by major automotive customers
- Extremely low whisker propensity passing JESD201 etc.
- Available as low speed version for rack/barrel applications (about 0.2 $\mu\text{m}/\text{min}$) or high-speed versions that can deposit up to 30 $\mu\text{m}/\text{min}$ tin
- Ideally combined with our Protectostan® and SuperDip SN products to preserve excellent solderability
- Free of Fluoroborate and NPEs

Niveostan[®] – Pure and reliable tin deposits

| Product | Niveostan [®] SL | Niveostan [®] SL Plus | Niveostan [®] A1 | Niveostan [®] A200 |
|---|---------------------------------------|---|---|--|
| Appearance | Semibright | Semibright | Semibright | Semibright |
| Application | Rack/Barrel | Reel to Reel | Rack/Barrel | Reel to Reel |
| Current density range ASD | 0.5 – 3.0 | 5 – 25 | 1 – 5 | 5 – 60 |
| Deposition speed $\mu\text{m}/\text{min}$ | 0.2 – 1.2 | 2.5 – 12.5 | 0.5 – 2.5 | 2.5 – 30 |
| Grain size μm | 3 – 10 | 3 – 10 | 3 – 10 | 3 – 10 |
| Roughness RSAI %* | 15 – 20 | 15 – 20 | 15 – 20 | 15 – 20 |
| Carbon content ppm | < 25 | < 25 | < 25 | < 25 |
| Sulfur content | < 5 | < 5 | < 5 | < 5 |
| Solderability | Excellent | Excellent | Excellent | Excellent |
| Cutting edge | Qualified for automotive applications | Medium speed version qualified for automotive | Exceptional uniformity for all designs-even the most difficult ones | Highest deposition speed, qualified for automotive |

* RSAI = Relative surface area increase compared to a totally flat surface, measured by interferometer microscope on connectors with 3 μm Sn



Atotech Group
 Erasmusstraße 20
 10553 Berlin – Germany
 +49 30 349850
 info@atotech.com

